

50Ah Prismatic LiFePO4 Cell 3.2v 50Ah LiFePO4 Battery

Brand new Grade A LFP 3.2v 50ah prismatic LiFePO4 battery cell. There are several different dimensions and specifications for you to choose. And different terminals, screws and busbars are available. The 50ah LiFePO4 battery cells comply with MSDS, UN38.3, UL, CB, CE and other certificates.

3.2v 50Ah LiFePO4 Battery Datasheet



Nominal Voltage: 3.2v

Nominal Capacity: 50Ah

Cell Weight: 1.05 ± 0.1kg

Work Voltage: 2.5-3.65V

Internal Resistance: ≤2.0mΩ

Dimension: 148.3*26.7*129.8mm

Energy Density: 152.38Wh/kg

Standard Charge/Discharge Current: 0.5C/0.5C

Operating Temperature: Discharge : -20-55°C, Charge: 0-55°C

Cycle Life: ≥1500 times

Recommend SOC window: 10%~90%

3.2v 50Ah LiFePO4 Battery Datasheet

Item	Specification	Note
Nominal Capacity	50Ah	(25±2)°C, Standard charge and discharge.
Nominal Voltage	3.2V	
Internal Resistance(1KHz)	≤ 2.0 mΩ	
Standard charge and discharge current	0.5C/0.5C	(25±2)°C
Standard Cut off voltage of charge/discharge	3.65V/2.5V	(25±2)°C
Dimensions(mm)	Width	148.3±0.3
	Thickness	26.7±1.0
	Height	125.4±0.5(Shoulder Height)
128.2±0.5(Total Height)		
Self-discharge rate per month	Per month ≤3%	(25±2)°C, 30%~50%SOC storage
Charging Temperature	0°C~55°C	
Discharging Temperature	-20°C~55°C	

Storage Temperature	-20°C~45°C	Short term(within 1 month)
Recommended scope of SOC	10~90%SOC	
Weight	1.05±0.1 Kg	
Energy Density	152.38Wh/kg	
Cycle Life @25°C	≧ 1500Cycles	25±2°C, 0.5C/0.5C
Maximum Continuous charge/discharge current	1C/1C	
Maximum Pulse charge/discharge(30s) current	1.2C/1.2C	
Storage humidity range	<95%	

More Information Please Go to: www.nbcellenergy.com. Or Email Us: info@nbcell.com

3.2v 50Ah Prismatic LiFePO4 Cell Datasheet



Nominal Voltage: 3.2v

Nominal Capacity: 50Ah

Cell Weight: 1.395 ± 0.05kg

Work Voltage: 2.5-3.65V

Internal Resistance: ≤0.7mΩ

Dimension: 135.3*29.3*185.3mm

Energy Density: 114.70Wh/kg

Standard Charge/Discharge Current: 0.5C/0.5C

Continuous Charge/Discharge Current: 3C/3C

Pulse Charge/Discharge Ccurrent(30s): 5C/5C

Operating Temperature: Discharge : -20-55°C, Charge: 0-55°C

Cycle Life: ≥ 7000 times

Recommend SOC window: 10%~90%

3.2v 50Ah Prismatic LiFePO4 Cell Datasheet

Item	Specification	Note
Nominal Capacity	50Ah	(25±2)°C , Standard charge and discharge.
Nominal Voltage	3.2V	
AC Impedance resistance(1KHz)	≤ 0.7mΩ	

Standard charge and discharge current	0.5C/0.5C	(25±2)°C
Standard Cut off voltage of charge/discharge	3.65V/2.5V	(25±2)°C
Dimensions(mm)	Width	135.3±0.5
	Thickness	29.3±0.7
	Height	180.8±0.5(Shoulder Height)
		185.3±0.5(Total Height)
Self-discharge rate per month	Per month ≤3%	(25±2)°C, 30%~50%SOC storage
Charging Temperature	0°C~55°C	
Discharging Temperature	-20°C~55°C	
Storage Temperature	-20°C~45°C	Short term(within 1 month)
Recommended scope of SOC	10~90%SOC	
Weight	1.395±0.05 Kg	
Energy Density	114.70Wh/kg	
Cycle Life @25°C	≧ 7000Cycles	1C/1C
Maximum Continuous charge/discharge current	3C/3C	
Maximum Pulse charge/discharge(30s) current	5C/5C	
Storage humidity	<95%	

More Information Please Go to: www.nbcellenergy.com. Or Email Us: info@nbcell.com

3.2v 50Ah LiFePO4 Battery Cell Datasheet

Nominal Voltage: 3.2v

Nominal Capacity: 50Ah

Cell Weight: 1.18 ± 0.05kg

Work Voltage: 2.5-3.65V

Dimension: 149.1*39.72*95.64mm

Energy Density: 140Wh/kg

Standard Charge/Discharge Current: ≤ 50A

Maximum Discharging Current: ≤150A @30s

Maximum Charging Current: ≤100A @30s



Operating Temperature: Discharge : -20-55°C, Charge: 0-55°C

Cycle Life: ≥4000 times

Storage ambient humidity: < 95%ROH, no condensation

3.2v 50Ah LiFePO4 Battery Cell Datasheet

Item	Specification	Note
Typical Capacity	50Ah	
Typical Voltage	3.2V	
Work Voltage	2.5-3.65V	
Dimensions(mm)	Length	149.1±0.5
	Width	39.72±0.3
	Shoulder Height	95.64±0.5
	Total Height	101.31±0.5
Standard Discharging Current	≤50 A	
Standard Charging Current	≤50 A	
Maximum Discharging Current	≤150A	@30s
Maximum Charging Current	≤100A	@30s
Operating Temperature	0°C < T ≤ 55°C	Charge
	-20°C ≤ T ≤ 55°C	Discharge
Storage Temperature	-30°C ~ 60°C	Storage ambient humidity < 95%ROH, no condensation
Cathode Materia	LiFeO4	
Cell Weight	1.18 ± 0.05 kg	
Energy Density	~140 Wh/kg	
SOC	27%SOC	
Standard Charging Method (CC&CV)	In an ambient temperature of 25 ± 2°C, battery is charged with constant current of 1I(A) until 3.65 V. Then it is charged at a constant voltage of 3.65 V until the current is less than 0.051I(A), and rest one hour.	
Standard Discharging Current	25A	25 ± 2°C
Maximum Continuous Discharging Current	50A	25 ± 2°C
Maximum Discharging Current(long pulse)	150A	25 ± 2°C, ≥ 30%SOC, 30s

Cut-off voltage	2.5V	25 ± 2 °C
Cycle Life	≥2000 cycles	

More Information Please Go to: www.nbcellenergy.com. Or Email Us: info@nbcell.com

LiFePO4 Battery Accessories

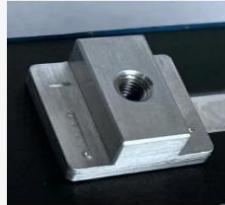
In a world where LiFePO4 battery cells often come with flat terminals, our clients frequently seek assistance in welding battery terminals for future convenience. Below are samples of the terminals we've provided, giving you the freedom to choose according to your needs.

Unsure about the right terminal for you? Don't worry! With our wealth of experience, we're here to offer advice or craft the customized terminals just for you.

And it doesn't stop there! In addition to terminals, busbars, screws and other battery components are equally indispensable. We tailor-fit accessories according to various LiFePO4 battery cells models, ensuring seamless compatibility. From BMS to battery enclosures and beyond, we've got you covered for all your battery accessory needs.



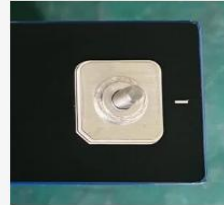
Flat Terminal



Welding Terminal With Screw Hole



Customised Terminal



Terminal With Stud



Terminal With Screw Hole



Busbars And M6 Screws



M4 Screws And Busbar



Busbars



Customised Busbars



BMS

More Information Please Go to: www.nbcellenergy.com. Or Email Us: info@nbcell.com