

3.2v 90Ah LiFePO4 Battery

Brand new Grade A LFP 3.2v 90ah LiFePO4 battery cell. Battery terminals come with M4 screw holes. And different terminals, screws and busbars are available. The 90ah LiFePO4 battery cells comply with MSDS, UN38.3, UL, CB, CE and other certificates.

3.2v 90Ah LiFePO4 Battery Datasheet



Nominal Voltage: 3.2v
 Nominal Capacity: 90Ah
 Cell Weight: 1.994 ± 0.05kg
 Work Voltage: 2.5-3.65V
 Internal Resistance: ≤0.5mΩ
 Dimension: 130.3*36.7*200.5mm
 Energy Density: 144.43Wh/kg
 Standard Charge/Discharge Current: 1C/1C
 Operating Temperature: Discharge : -20-55°C, Charge: 0-55°C
 Cycle Life: ≥6000 times
 Recommend SOC window: 10%~90%

3.2v 90Ah LiFePO4 Battery Datasheet

Item	Specification	Note
Nominal Capacity	90Ah	25±2 °C, Standard Charge and Discharge
Nominal Energy	3.2V	
Internal Resistance(1KHz)	≤ 0.5 mΩ	
Working Voltage	2.5-3.65V	
Dimensions(mm)	Width	130.3±0.3
	Thickness	36.7±0.5
	Height	195.5±0.5(Shoulder Height)
200.5±0.5(Total Height)		
Residual Capacity Loss	Per month ≤3%	30%~50%SOC, 25±2°C Storage
Working Temperature	Charge: 0°C~55°C	
	Discharge: -20°C~55°C	
Storage ambient humidity	< 95%	

Recommended SOC Range	10~90%SOC	
Cell Weight	1.994±0.05 Kg	
Energy Density	144.43 Wh/kg	
Cycle Life @25°C	≧ 6000Cycles @1C	
Standard Charge Rate	1C	25±2°C
Standard Charge Method	CC/CV	
Standard Discharge rate	1C	
Shipping SOC	30%~50% SOC	

More Information Please Go to: www.nbcellenergy.com. Or Email Us: info@nbcell.com

LiFePO4 Battery Accessories

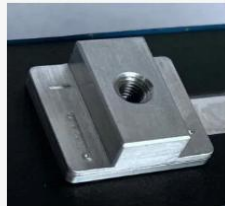
In a world where LiFePO4 battery cells often come with flat terminals, our clients frequently seek assistance in welding battery terminals for future convenience. Below are samples of the terminals we've provided, giving you the freedom to choose according to your needs.

Unsure about the right terminal for you? Don't worry! With our wealth of experience, we're here to offer advice or craft the customized terminals just for you.

And it doesn't stop there! In addition to terminals, busbars, screws and other battery components are equally indispensable. We tailor-fit accessories according to various LiFePO4 battery cells models, ensuring seamless compatibility. From BMS to battery enclosures and beyond, we've got you covered for all your battery accessory needs.



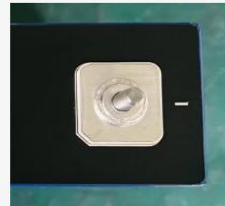
Flat Terminal



Welding Terminal With Srew Hole



Customised Terminal



Terminal With Stud



Terminal With Srew Hole



Busbars And M6 Screws



M4 Screws And Busbar



Busbars



Customised Busbars



BMS

More Information Please Go to: www.nbcellenergy.com. Or Email Us: info@nbcell.com